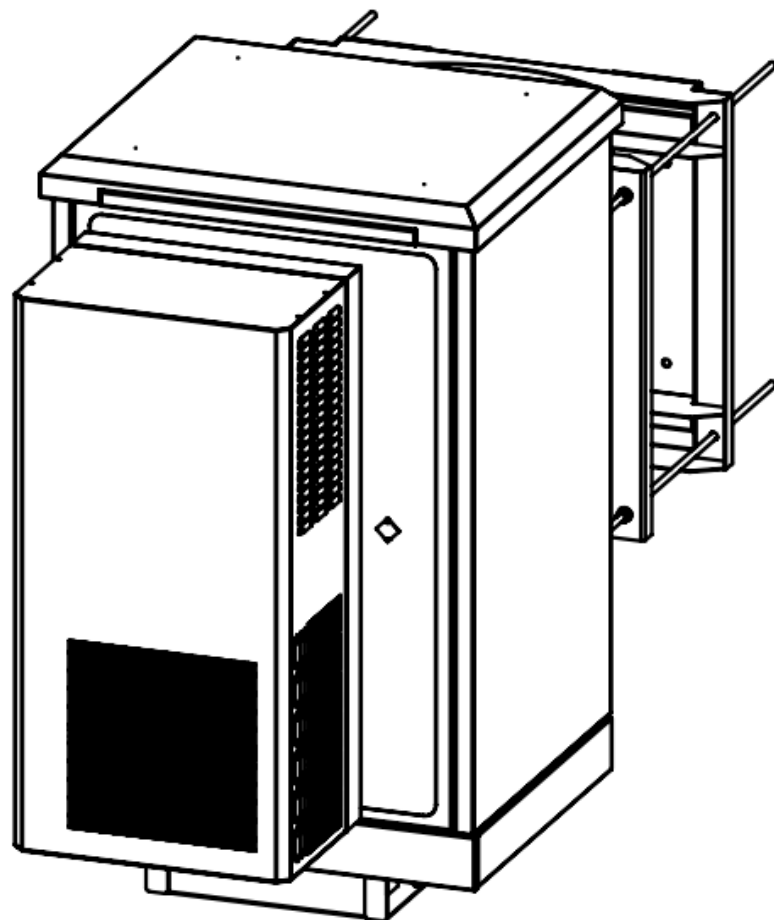




**teco**

**PRODUCT DESCRIPTION**



**OUTDOOR  
FLOOR/WALL-  
MOUNTING CABINET**

Model: **AW-U – G.15.77.66.22U/0.15AC\_DC**

Art. **TEKO 1123-1.00.00.000**

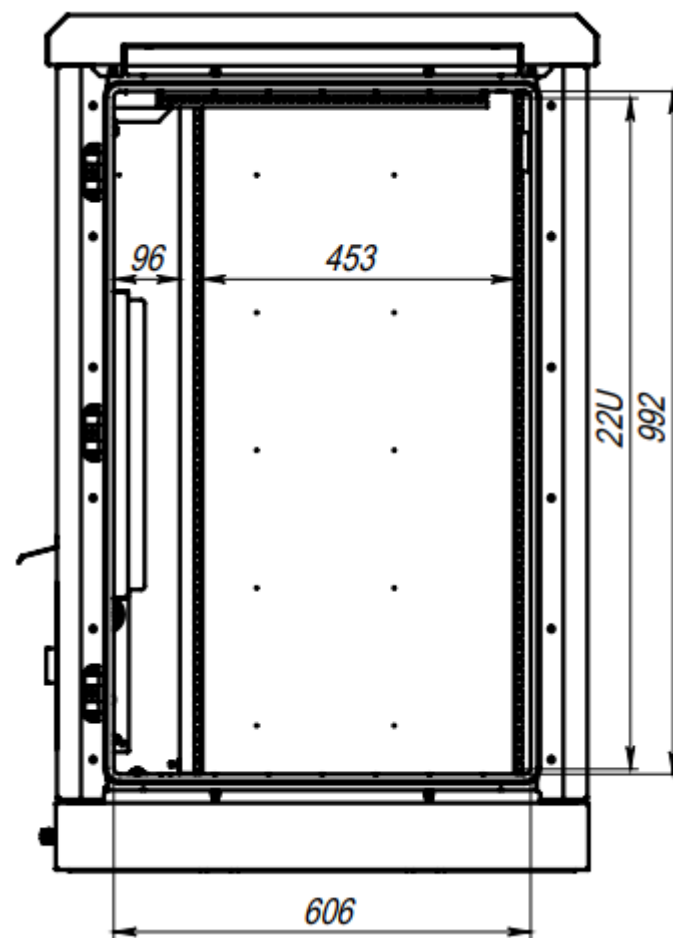
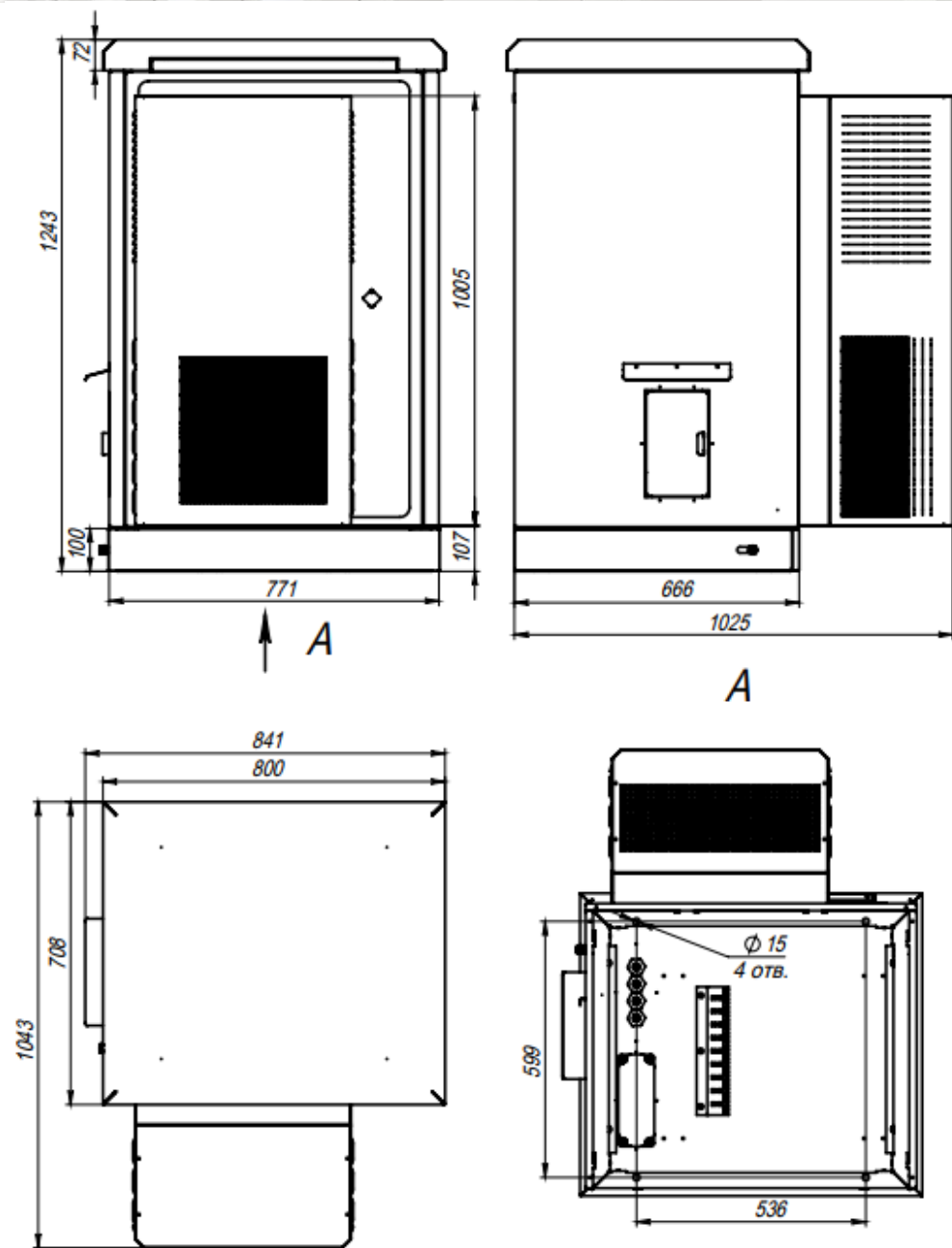
## TECO OUTDOOR FLOOR/WALL-MOUNTING CABINET

Outdoor floor/wall-mounting cabinet «**AW-U – G.15.77.66.22U/0.15AC\_DC**» - is designed to accommodate telecommunications server equipment and various electrical equipment in a variety of outdoor conditions (with high rainfall and humidity, low/high temperature conditions). Cabinet have one 22U compartment with AC/DC air conditioner TAIC1500 AC/DC with cooling capacity 1500W(L35/L35). Unique design and wide range of climate control solutions allows operating in harsh environments with a temperature range -40C - + 55C. This cabinet are simple in setup and installation.

### Outdoor cabinet AW-U – G.15.77.66.22U/0.15AC\_DC benefits:

- Cabinet dimensions 1243×770×665 H×W×D
- Cabinet total inside height 22U.
- Front vertical racks for equipment mounting.
- Plug for diesel-generator connecting.
- Switch I-0-II for changing source of power – DG or grid.
- Possibility of installing the cabinet on pole with additional set of hanging bracket.
- Type of walls – sandwich-panel, thickness of insulation – 50 mm
- Anti-Vandal case.

<b>Material</b>	<ul style="list-style-type: none"> <li>▪ Welded case.</li> <li>▪ Inner walls – galvanized steel, thickness 1 mm.</li> <li>▪ Outer walls – galvanized steel, thickness 1,5 mm.</li> </ul>
<b>Door</b>	<ul style="list-style-type: none"> <li>▪ One door.</li> <li>▪ Door opening angle — not more 130°.</li> <li>▪ Locking system — three-point.</li> </ul>
<b>Coating</b>	<ul style="list-style-type: none"> <li>▪ Semi-textured outdoor powder-coat paint RAL 7035, 10 years warranty.</li> </ul>
<b>Temperature conditions</b>	<ul style="list-style-type: none"> <li>▪ -40°C to +55°C.</li> </ul>
<b>Cooling system</b>	<ul style="list-style-type: none"> <li>▪ AC/DC air conditioner TAIC1500 AC/DC with cooling capacity 1500W(L35/L35).</li> </ul>
<b>Protection rating</b>	<ul style="list-style-type: none"> <li>▪ IP 55</li> </ul>



<b>Total</b>		
Dimensions, Height × Width × Depth	mm	1243×770×665
Degree of protection	IP	55
Voltage	V	220V AC 50 Hz/ 48V DC
Door	pcs	1
Lock	pcs	1
Socle	pcs	1
Roof	pcs	1
Insulation	Type	Mineral wool
Thickness of insulation	mm	50
<b>Cooling system</b>		
<b>Air conditioner TAIC1500AC/DC</b>	pcs	1
Rated voltage	V	220V 50-60 Hz/48V DC
Current	A	2,5
Cooling capacity	W	1500 (L35/L35)
Noise level 1/2/3 m	dB	61/59/58
<b>Equipment</b>		
19" rail for power supply and customer's equipment	set	1
SPD class II 4P	pcs	1
MCB 32A 3P	pcs	1
Switch I-0-II 40A 3P	pcs	1
MCB 10A 1P	pcs	1
MCB 6A 1P	pcs	1
MCB 2A 1P	pcs	2
RCD 16A, 30mA	pcs	1
Service socket 16A	pcs	1
Service light 48VDC with door switch	pcs	1
Controller CMSU	pcs	1
Door open sensor	pcs	1
Dry contact block (LSA-profile)	pcs	1
Grounding bus-bar (copper)	pcs	1
Pole hanging bracket	pcs	1
Cable entries from bottom	Type x pcs	PG21 x 4
<b>Other information</b>		
Application	-	Outdoor
Mounting Method	-	Floor/Wall/Pole

teco

📍 Zaliutynska Str., 10, Kharkiv, Ukraine, 61177

☎ tel. +38 (057) 341-45-41  
tel. +38 (057) 372-10-42  
fax +38 (057) 341-60-30

🌐 [teco-ua.com](http://teco-ua.com)

✉ [info@teco-ua.com](mailto:info@teco-ua.com)